

*Egon and Ann Diczfalussy Foundation for
Supporting Research in Reproductive Health*



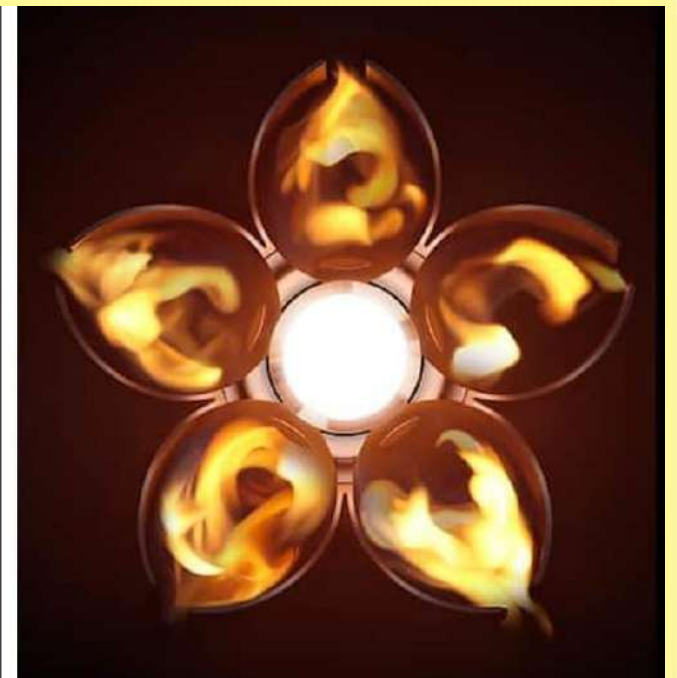
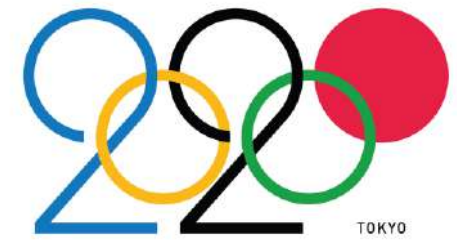
14th Annual "Online" Meeting of the Egon and Ann Diczfalussy Foundation

Professor Diczfalussy's dream comes true: Young Diczfalussy Fellows carry on the torch

Aleksandra Vejnović, MD, assistant
University of Novi Sad, Medical Faculty



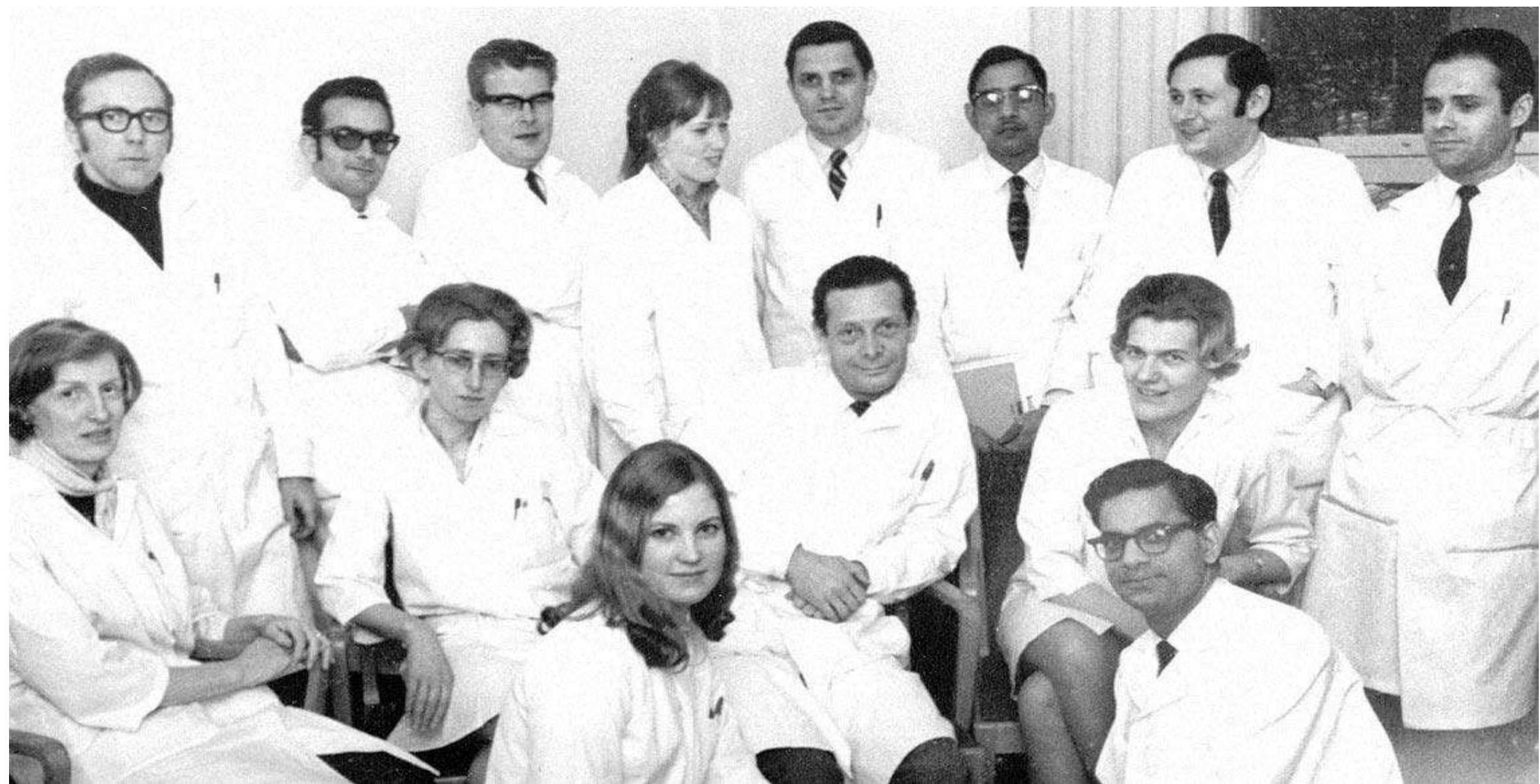
March 2020



100th Birthday



Hundred wishes and new ideas



Purpose:

- Supporting scientific work conducted in the field of **improving reproductive health**
- **Recognising** scientific results achieved so far.
- Launching **new research** programs
- Supporting the **exchange** of junior scientists
- Promoting and supporting **lectures** and **publications** on the subject of reproductive health
- Organizing **scientific events**.



Winners of the Diczfalusy Foundation Young Scientist Award



María Natalia Cruz
2007



Eszter Ducza
2008



Claudiu Avram
2009



Signe Altmäe
2010



Dunja Loncar
2011



Cristian Furau
2011



Attila
Molvarec2012



Silvia Visentin
2013



Salvatore Gizzo
2014



Gyula Richard Nagy
2015



Nicolae Bacalbasa
2016



Aleksandra Vejnović
2017



Michael Feichtinger
2018



Dan Dumitrascu-Biris
2019

Young Diczfalusy Fellows

- Established in October 2015
Novi Sad DAL 9
- First YDF Session in 2016
Budapest DAL 10
- The Foundation supports
young members



Goals and Activities:

- Provide the further **training** of physicians, other professionals and health care workers, as well as assist them to **attend conferences** in Hungary, Romania, Serbia or abroad;
- Launch **new research** programs in the subject of improving reproductive health;
- Support the **exchange** of scientists and young clinicians;
- Organize scientific **conferences, courses** and **trainings**;
- Promote and support informative **lectures** and **publications**

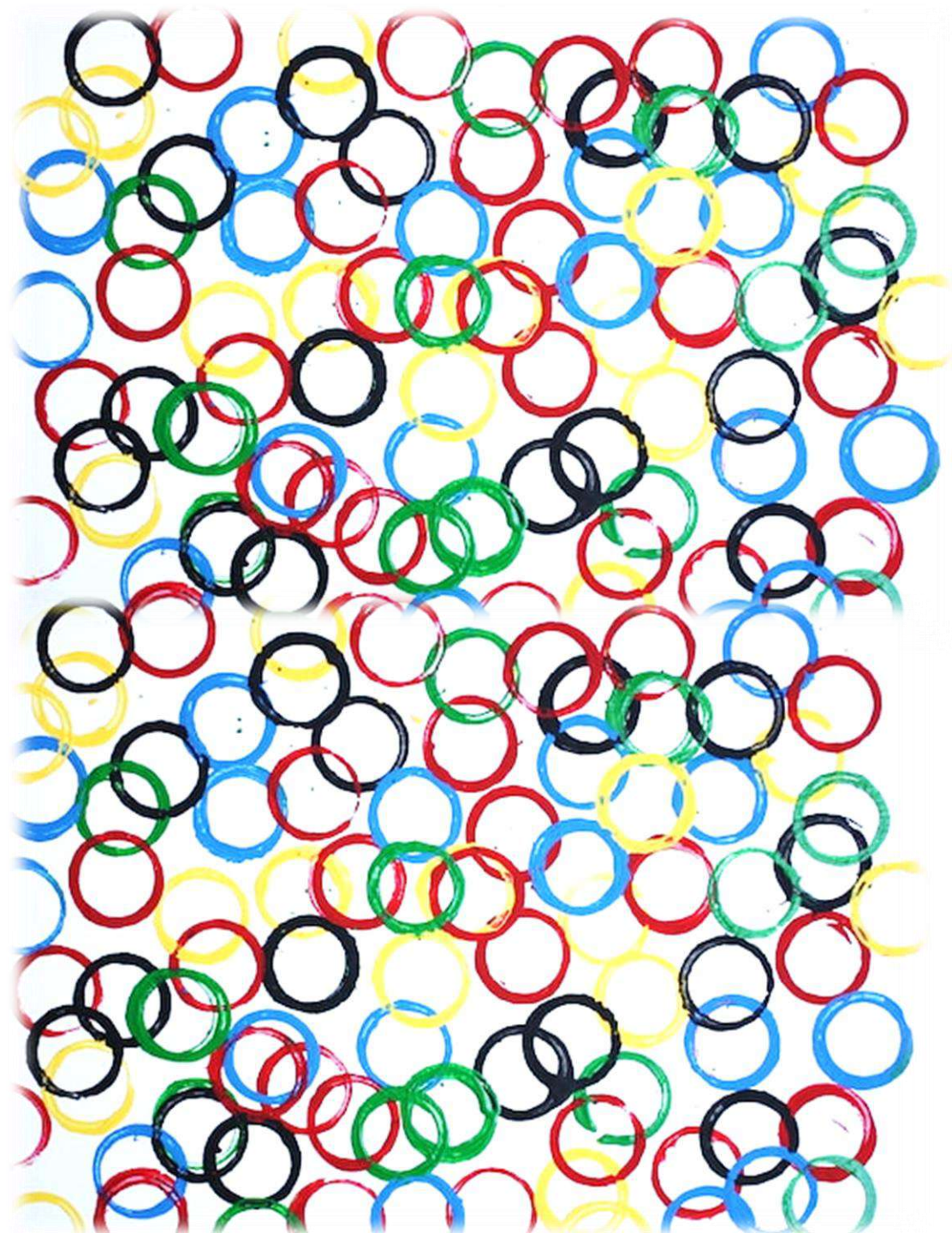
Vision

- Build a network
- New ideas
- Interests-custom Symposium

The Foundation in the search for the Audience



The Audience in search for the Foundation



Membership

University of Novi Sad

University of Belgrade

University of Budapest

University of Szeged

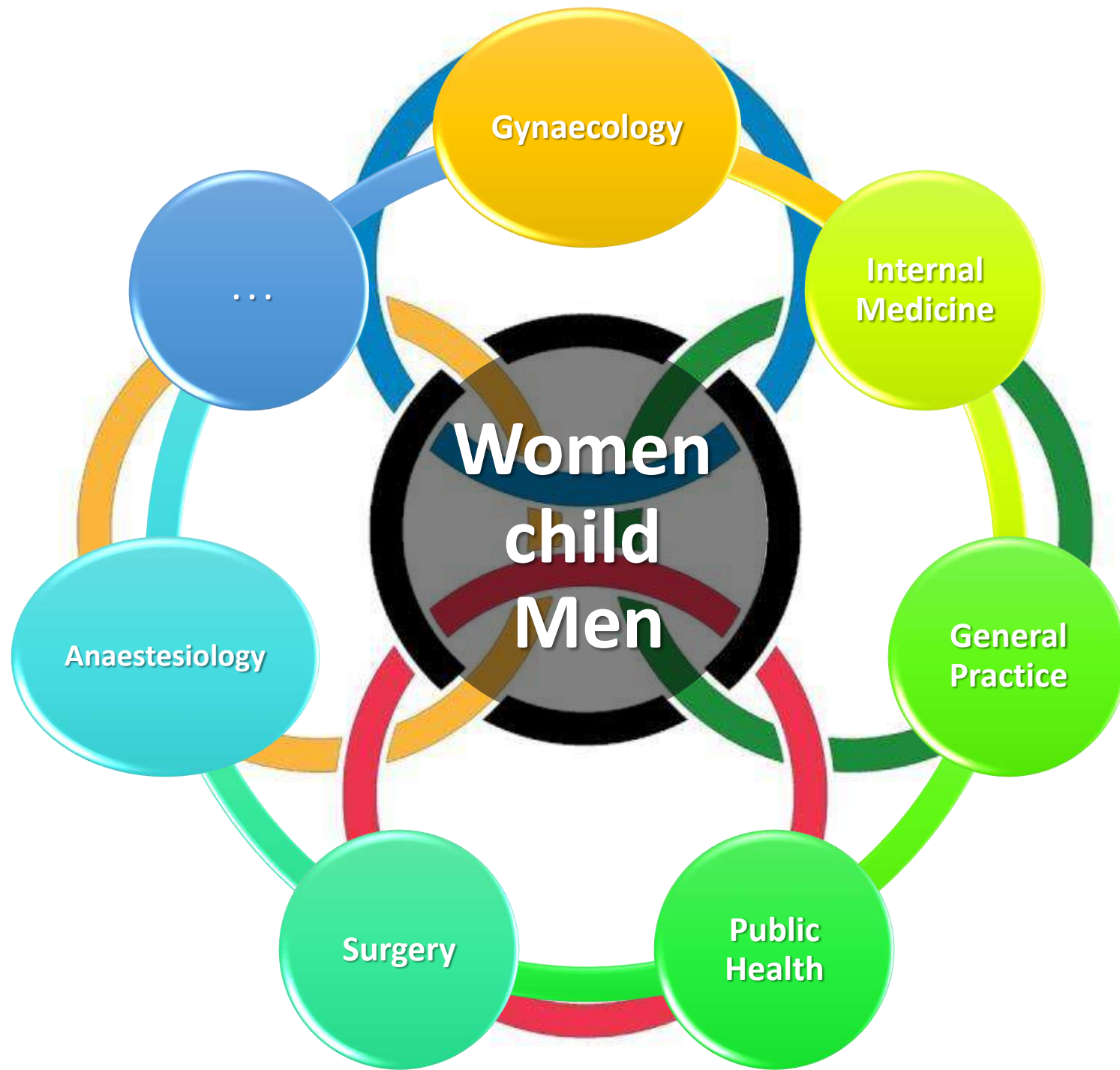
University of Bucharest

University of Timisoara

University of Oradea

University of Arad





First members

- Aleksandra Vejnović
- Anita Krsman
- Branislava Baturan
- Milkica Jović
- Saša Karaklajić

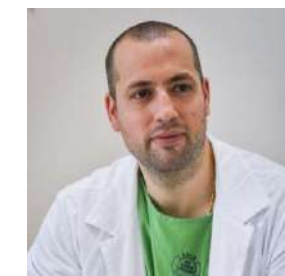
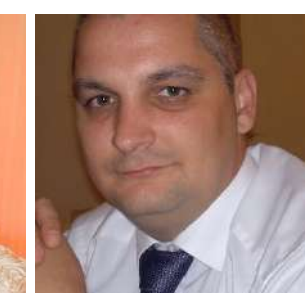
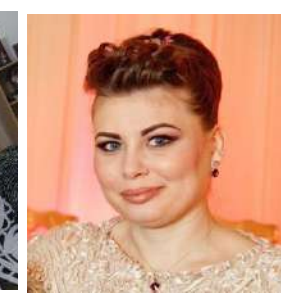
Romania

Serbia

Hungary

- Cristian Furau
- Ana Liana Tataru
- Cristina Onel
- Rares Gherai
- Madalin Marius Margan

- Andras Molnar
- Gyula Richard Nagy





[illegible]

APRIL							MAY							JUNE						
mon	tue	wed	thu	fri	sat	sun	mon	tue	wed	thu	fri	sat	sun	mon	tue	wed	thu	fri	sat	sun
		1	2	3	4	5					1	2	3	1	2	3	4	5	6	7
6	7	8	9	10	11	12	4	5	6	7	8	9	10	8	9	10	11	12	13	14
13	14	15	16	17	18	19	11	12	13	14	15	16	17	15	16	17	18	19	20	21
20	21	22	23	24	25	26	18	19	20	21	22	23	24	22	23	24	25	26	27	28
27	28	29	30				25	26	27	28	29	30	31	29	30					

[illegible]

JANUARY												FEBRUARY													
align	Jan	Feb	Wed	Thurs	Fri	Sat	Sun		align	Jan	Feb	Wed	Thurs	Fri	Sat	Sun		align	Jan	Feb	Wed	Thurs	Fri	Sat	Sun
	4	5	6	7	8	9	10			1	2	3	4	5	6	7			1	2	3	4	5	6	7
	11	12	13	14	15	16	17			8	9	10	11	12	13	14			8	9	10	11	12	13	14
	18	19	20	21	22	23	24			15	16	17	18	19	20	21			15	16	17	18	19	20	21
	25	26	27	28	29	30	31			22	23	24	25	26	27	28			22	23	24	25	26	27	28

Figure 1 displays three screenshots of the Erasmus+ project website, showing the layout and content of the site. The screenshots are arranged horizontally, illustrating the visual design and information presented on the website.

JULY										AUGUST									
sun	mon	tue	wed	thu	fri	sat	sun	mon	tue	sun	mon	tue	wed	thu	fri	sat	sun	mon	tue
					1	2	3			1	2	3	4	5	6	7			
4	5	6	7	8	9	10				8	9	10	11	12	13	14			
11	12	13	14	15	16	17				15	16	17	18	19	20	21			
18	19	20	21	22	23	24				22	23	24	25	26	27	28			
25	26	27	28	29	30	31				29	30	31							

JANUARY							FEBRUARY							MARCH						
month	tue	wed	thu	fri	sat	SUN	month	tue	wed	thu	fri	sat	SUN	month	tue	wed	thu	fri	sat	SUN
						1				1	2	3				1	2	3	4	
2	3	4	5	6	7	8	6	7	8	9	10	11	6	7	8	9	10	11		
9	10	11	12	13	14	15	13	14	15	16	17	18	13	14	15	16	17	18		
16	17	18	19	20	21	22	20	21	22	23	24	25	20	21	22	23	24	25		
23	24	25	26	27	28	29	27	28					27	28	29	30	31			
30	31																			

APRIL							MAY							JUNE						
mon	tue	wed	thu	fri	sat	sun	mon	tue	wed	thu	fri	sat	sun	mon	tue	wed	thu	fri	sat	sun
						1	1	2	3	4	5	6	7	8	9	10	11	12	13	14
3	4	5	6	7	8	9	8	9	10	11	12	13	14	15	16	17	18	19	20	21
10	11	12	13	14	15	16	15	16	17	18	19	20	21	22	23	24	25	26	27	28
17	18	19	20	21	22	23	22	23	24	25	26	27	28	29	30	31				
24	25	26	27	28	29	30	29	30	31											

JULY							AUGUST							SEPTEMBER						
mon	tue	wed	thu	fr	sat	sun	mon	tue	wed	thu	fr	sat	sun	mon	tue	wed	thu	fr	sat	sun
					1	2	1	2	3	4	5	6	7	1	2	3				
3	4	5	6	7	8	9	7	8	9	10	11	12	13	4	5	6	7	8	9	10
10	11	12	13	14	15	16	14	15	16	17	18	19	20	11	12	13	14	15	16	17
17	18	19	20	21	22	23	21	22	23	24	25	26	27	18	19	20	21	22	23	24
24	25	26	27	28	29	30	28	29	30	31				25	26	27	28	29	30	
31																				

The figure displays three calendar grids for the months of October, November, and December 2017. Each grid is a 5x7 table where the first three columns represent the week days (Mon, Tue, Wed) and the last four columns represent the month days (Thu, Fri, Sat, Sun). The October grid shows days 1-31. The November grid shows days 1-30. The December grid shows days 1-31.

OCTOBER							NOVEMBER							DECEMBER						
mon	tue	wed	thu	fri	sat	sun	mon	tue	wed	thu	fri	sat	sun	mon	tue	wed	thu	fri	sat	sun
						1				1	2	3	4					1	2	3
2	3	4	5	6	7	8	6	7	8	9	10	11	12	4	5	6	7	8	9	10
9	10	11	12	13	14	15	13	14	15	16	17	18	19	11	12	13	14	15	16	17
16	17	18	19	20	21	22	20	21	22	23	24	25	26	18	19	20	21	22	23	24
23	24	25	26	27	28	29	27	28	29	30				25	26	27	28	29	30	31
30	31																			

JANUARY							FEBRUARY							MARCH						
mon	tue	wed	thu	fri	sat	sun	mon	tue	wed	thu	fri	sat	sun	mon	tue	wed	thu	fri	sat	sun
1	2	3	4	5	6	7				1	2	3	4				1	2	3	4
8	9	10	11	12	13	14	5	6	7	8	9	10	11	5	6	7	8	9	10	11
15	16	17	18	19	20	21	12	13	14	15	16	17	18	12	13	14	15	16	17	18
22	23	24	25	26	27	28	19	20	21	22	23	24	25	19	20	21	22	23	24	25
29	30	31					26	27	28					26	27	28	29	30	31	

APRIL							MAY							JUNE						
mon	tue	wed	thu	fri	sat	sun	mon	tue	wed	thu	fri	sat	sun	mon	tue	wed	thu	fri	sat	sun
						1		1	2	3	4	5	6					1	2	3
2	3	4	5	6	7	8	7	8	9	10	11	12	13	4	5	6	7	8	9	10
9	10	11	12	13	14	15	14	15	16	17	18	19	20	11	12	13	14	15	16	17
16	17	18	19	20	21	22	21	22	23	24	25	26	27	18	19	20	21	22	23	24
23	24	25	26	27	28	29	28	29	30	31				25	26	27	28	29	30	

JULY								AUGUST								SEPTEMBER							
mon	tue	wed	thu	fri	sat	sund		mon	tue	wed	thu	fri	sat	sund		mon	tue	wed	thu	fri	sat	sund	
						1					1	2	3	4	5							1	2
2	3	4	5	6	7	8		6	7	8	9	10	11	12		3	4	5	6	7	8	9	
9	10	11	12	13	14	15		13	14	15	16	17	18	19		10	11	12	13	14	15	16	
16	17	18	19	20	21	22		20	21	22	23	24	25	26		17	18	19	20	21	22		

OCTOBER							NOVEMBER							DECEMBER							
mon	tue	wed	thu	fri	sat	sun	mon	tue	wed	thu	fri	sat	sun	mon	tue	wed	thu	fri	sat	sun	
1	2	3	4	5	6	7				1	2	3	4							1	2
8	9	10	11	12	13	14	5	6	7	8	9	10	11	3	4	5	6	7	8	9	10
15	16	17	18	19	20	21	12	13	14	15	16	17	18	10	11	12	13	14	15	16	17
22	23	24	25	26	27	28	19	20	21	22	23	24	25	17	18	19	20	21	22	23	24

JANUARY										FEBRUARY										MARCH									
mon	tue	wed	thu	fri	sat	sun	mon	tue	wed	thu	fri	sat	sun	mon	tue	wed	thu	fri	sat	sun	mon	tue	wed	thu	fri	sat	sun		
1	2	3	4	5	6					1	2	3		4	5	6	7	8	9	10	11	12	13	14	15	16	17	18	19
7	8	9	10	11	12	13	14	15	16	17	18	19	20	21	22	23	24	25	26	27	28	29	30	31					

APRIL							MAY							JUNE						
mon	tue	wed	thu	fri	sat	sun	mon	tue	wed	thu	fri	sat	sun	mon	tue	wed	thu	fri	sat	sun
1	2	3	4	5	6	7			1	2	3	4	5							
8	9	10	11	12	13	14	6	7	8	9	10	11	12	3	4	5	6	7	8	9
15	16	17	18	19	20	21	13	14	15	16	17	18	19	10	11	12	13	14	15	16
22	23	24	25	26	27	28	20	21	22	23	24	25	26	17	18	19	20	21	22	23
29	30						27	28	29	30	31			24	25	26	27	28	29	30

JULY								AUGUST								SEPTEMBER							
mon	tue	wed	thu	fri	sat	sun		mon	tue	wed	thu	fri	sat	sun		mon	tue	wed	thu	fri	sat	sun	
1	2	3	4	5	6	7		1	2	3	4	5	6	7		1	2	3	4	5	6	7	
8	9	10	11	12	13	14		8	9	10	11	12	13	14		8	9	10	11	12	13	14	
15	16	17	18	19	20	21		15	16	17	18	19	20	21		15	16	17	18	19	20	21	
22	23	24	25	26	27	28		22	23	24	25	26	27	28		22	23	24	25	26	27	28	

OCTOBER								NOVEMBER								DECEMBER							
mon	tue	wed	thu	fri	sat	sun		mon	tue	wed	thu	fri	sat	sun		mon	tue	wed	thu	fri	sat	sun	
	1	2	3	4	5	6						1	2	3								1	
7	8	9	10	11	12	13		4	5	6	7	8	9	10		2	3	4	5	6	7	8	
14	15	16	17	18	19	20		11	12	13	14	15	16	17		9	10	11	12	13	14	15	
21	22	23	24	25	26	27		18	19	20	21	22	23	24		16	17	18	19	20	21	22	

JANUARY							FEBRUARY							MARCH						
mon	tue	wed	thu	fri	sat	sund	mon	tue	wed	thu	fri	sat	sund	mon	tue	wed	thu	fri	sat	sund
			1	2	3	4	5					1	2							
6	7	8	9	10	11	12		3	4	5	6	7	8	9	10	11	12	13	14	15
13	14	15	16	17	18	19		10	11	12	13	14	15	16						
20	21	22	23	24	25	26		17	18	19	20	21	22	23	24	25	26	27	28	29
27	28	29	30	31				24	25	26	27	28	29							

APRIL							MAY							JUNE							
mon	tue	wed	thu	fri	sat	sun	mon	tue	wed	thu	fri	sat	sun	mon	tue	wed	thu	fri	sat	sun	
		1	2	3	4	5				1	2	3	4		1	2	3	4	5	6	7
6	7	8	9	10	11	12	11	12	13	14	15	16	17	18	19	20	21	22	23	24	25
13	14	15	16	17	18	19	4	5	6	7	8	9	10	11	12	13	14	15	16	17	18
20	21	22	23	24	25	26	18	19	20	21	22	23	24	25	26	27	28	29	30		
27	28	29	30				25	26	27	28	29	30	31		29	30					

JULY								AUGUST								SEPTEMBER								
mon	tue	wed	thu	fri	sat	sun		mon	tue	wed	thu	fri	sat	sun		mon	tue	wed	thu	fri	sat	sun		
			1	2	3	4	5							1	2		1	2	3	4	5	6	7	8
6	7	8	9	10	11	12		3	4	5	6	7	8	9		7	8	9	10	11	12	13	14	15
13	14	15	16	17	18	19		10	11	12	13	14	15	16		14	15	16	17	18	19	20	21	22
20	21	22	23	24	25	26		17	18	19	20	21	22	23		21	22	23	24	25	26	27	28	29

OCTOBER							NOVEMBER							DECEMBER						
mon	tue	wed	thu	fri	sat	sun	mon	tue	wed	thu	fri	sat	sun	mon	tue	wed	thu	fri	sat	sun
			1	2	3	4							1		1	2	3	4	5	6
5	6	7	8	9	10	11	2	3	4	5	6	7	8	7	8	9	10	11	12	13
12	13	14	15	16	17	18	9	10	11	12	13	14	15	14	15	16	17	18	19	20
19	20	21	22	23	24	25	16	17	18	19	20	21	22	21	22	23	24	25	26	27

YDF ACTIVITIES 2015-2020

2015

- Cesarean Section in the 21st century, **Oradea**
- Civil and criminal liability in the medical practice, **Gyula**
- Consilium Semestrae Aradean I, **Arad**



YDF ACTIVITIES 2015-2020

2016

- Consilium Semestrae Aradean II: Cesarean Section, **Arad**
- ERASMUS+, Methods and concepts of clinical approach in obstetrics and gynecology, **Novi Sad**
- Annual School of Obstetric Anesthesia and Obstetrics, **Novi Sad**
- 3rd National Conference of Minimal Invasive Surgery in Gynecology, **Arad-Timisoara**
- First Gynecology School for medical students, **Oradea**
- The 11th National conference of the Romanian Society of Obstetrics and Gynecology, **Bucharest**
- Multinational Training Course of Trainers on Cultural Challenges of Reproductive Health, **Szeged**
- Consilium Semestrae Aradean III, **Arad**







YDF ACTIVITIES 2015-2020

2017

- Multinational Training Course of Trainers on Cultural Challenges of Reproductive Health, **Szeged**
- Consilium Semestrae Aradean IV, **Arad**
- ESC, Multinational Training Course of Trainers on Cultural Challenges of Reproductive Health, **Novi Sad**
- Advanced Life Support Course in Obstetrics – ALSO, **Novi Sad**
- Second Gynecology School for medical students, **Oradea**
- Annual Meeting of Association of Gynecologists and Obstetricians of Serbia, Montenegro and Republic Srpska, **Belgrade**

Advanced Life Support in Obstetrics

Clinic of Gynaecology and Obstetrics, Novi Sad

ALSO
course









YDF ACTIVITIES 2015-2020

2018

- The 15th Congress of the European Society of Contraception and Reproductive Health, **Budapest**
- Advanced Life Support Course in Obstetrics – ALSO, **Novi Sad**
- Civil and criminal liability in the medical practice, **Gyula**
- Cesarean Section - Modification Vejnović Course, **Novi Sad**

YDF ACTIVITIES 2015-2020

2019

- Advanced Life Support Course in Obstetrics – ALSO, **Novi Sad**
- Consilium Semestrae Aradean VI, **Arad**: Challenges in Perinatal Care
- Civil and criminal liability in the medical practice, **Gyula**
- 3rd Training in Obstetric Surgery, Cesarean Section - Modification Vejnović Course, **Novi Sad**

Educational course

Caesarean section – Vejnović modification

Clinic of gynaecology and obstetrics in Novi Sad



1

Lectures

2

Live surgery course

3

Hands-on training on uterus suturing
by Vejnović modification





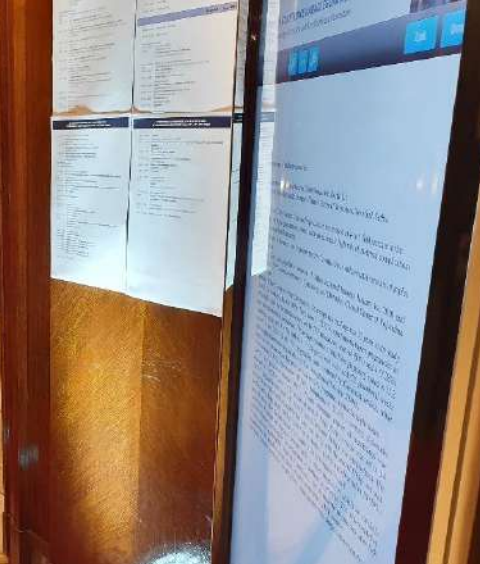
Statistics YDF 2015-2020

- More than 20 scientific events, courses and trainings
- Average number of participants per meeting 30-40
- Total 600-800 young doctors and students
- YDF sessions in three DAL meetings - 22 oral presentations
- More than 50 poster presentations
- Several doctoral thesis
- First projects









Future Plans

- Continue to organize scientific events, courses, webinars, hands-on trainings.
- Stimulate research in the field of reproductive health
 - Paper submission for YDF oral and poster presentation
 - Young Diczfalusy Award competition
 - Participation in the scientific projects
- Involve students and teaching staff in exchange programs
- Attract new members
- Gain more visibility and better promotion of events



Keep in touch till next meeting

- website: diczfalusyfoundation.org
- email address: dal.symposium@gmail.com



2020

19 Sep, 3 pm (CET)
ONLINE

14th Annual Meeting of the
Egon and Ann
Diczfalusy Foundation



2019

18 - 19 Oct
PRAGUE

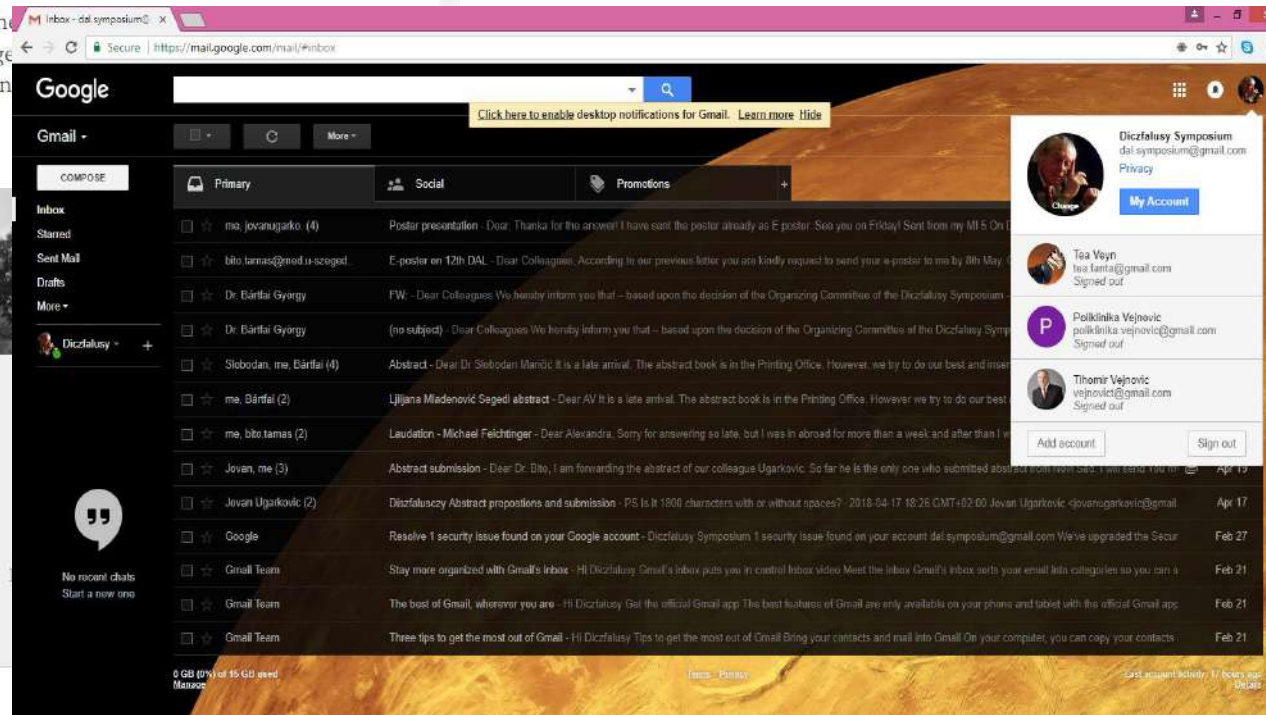
13th Annual Meeting of the
Egon and Ann
Diczfalusy Foundation




2018

11 - 12 May
BUDAPEST

12th Annual Meeting of the
Egon and Ann
Diczfalusy Foundation





**The most important thing in the olympic games
is not winning but taking part; the essential thing in life is
not conquering but fighting well.”**

Pierre de Coubertin